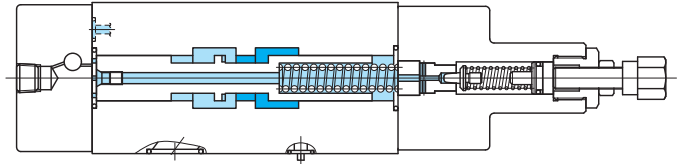
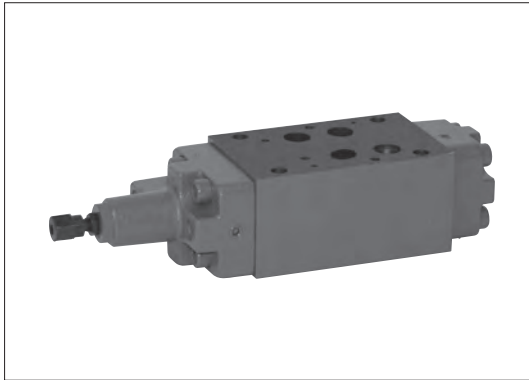
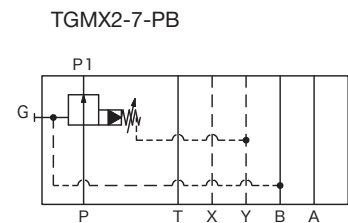
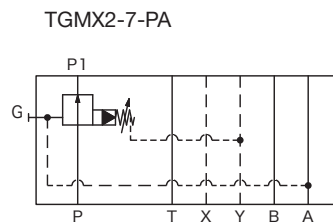
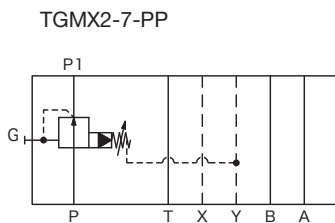


# Pressure reducing valves TGMX2-7, 50 series



## Functional Symbols



G  
37-1

Stack Valves

## Model Code

### TGMX2-7-P\*-\*W-50

1 2 3 4 5 6 7

- 1 Pressure reducing valve
- 2 Mounting dimensions  
7: ISO 4401-AD-07-4-A
- 3 Control port  
P: P port
- 4 Pilot line  
P: P line  
A: A line  
B: B line

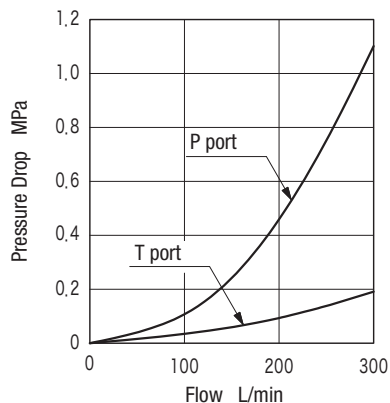
- 5 Pressure adjustment range  
B: 0.7~7 MPa  
C: 0.7~14 MPa  
F: 0.7~21 MPa
- 6 Adjuster  
W: hex socket adjustment screw
- 7 Design no.

## Specifications

- Max. Working Pressure: 21 MPa
- Max. Flow: 300 L/min

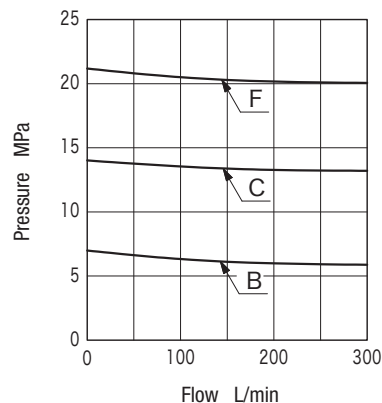
## Characteristics Curve (at 32 mm<sup>2</sup>/s, 40°C) (typical examples)

### ■ Pressure Drop Characteristics



- The curve for the P port applies when the spool inside the valve is fully opened.

### ■ Pressure Override Characteristics



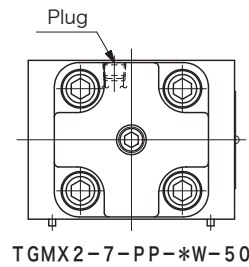
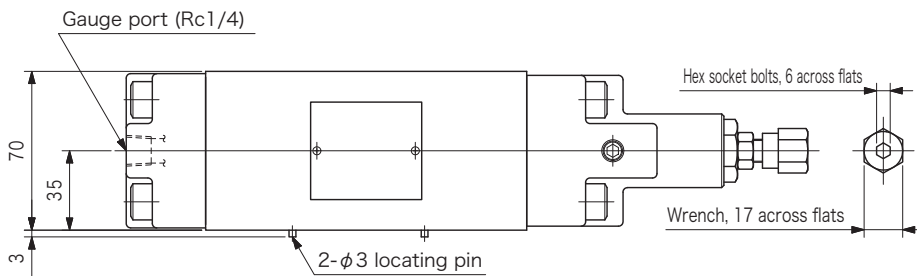
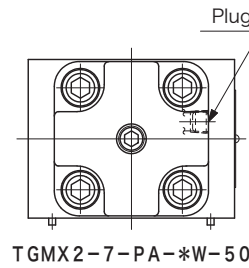
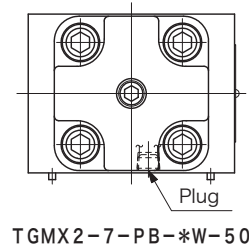
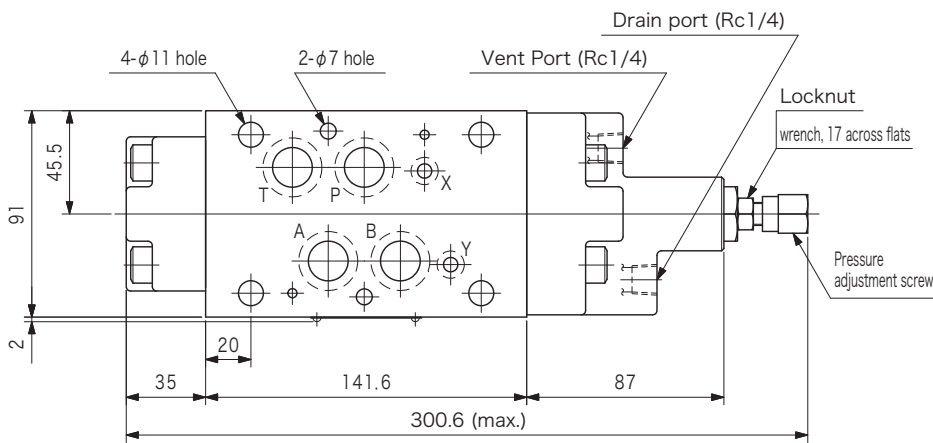
- Shown above is a typical example of a setting to the maximum pressure in the pressure adjustment range.
- The back pressure of the tank is added to these values to indicate the characteristics in the system.

TOKYO KEIKI INC.

## Dimensions

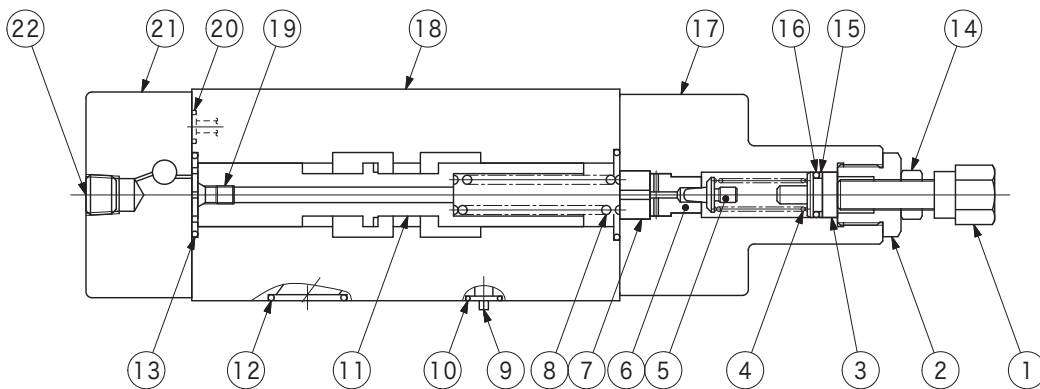
TGMX2-7-PP-\*W-50  
 TGMX2-7-PA-\*W-50  
 TGMX2-7-PB-\*W-50

Weight: 8.0 kg



## Construction

TGMX2-7-PP-\*W-50



No.	Name	Part No.	Standard	Qty
10	O-ring	007901319	AS568-013 (NBR, Hs90)	2
12	O-ring	007911819	AS568-118 (NBR, Hs90)	4
13	O-ring	-	JIS B 2401 1B-G25	2
15	Backup ring	-	JIS B 2407 T2-P11	1
16	O-ring	-	JIS B 2401 1A-P11	1
20	O-ring	-	JIS B 2401 1B-P7	4