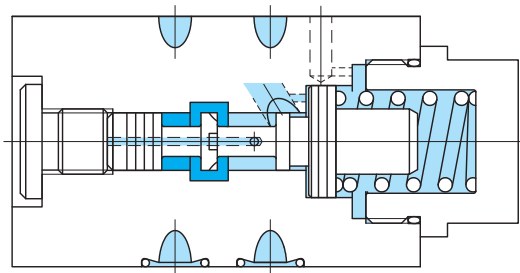
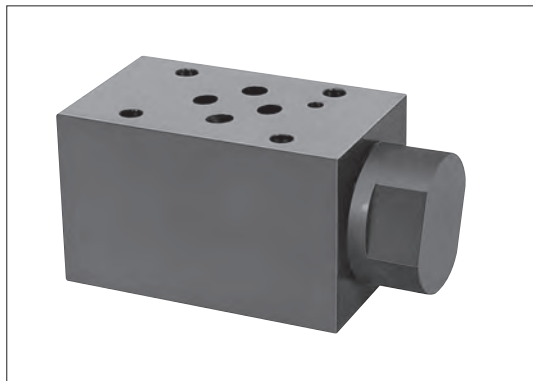
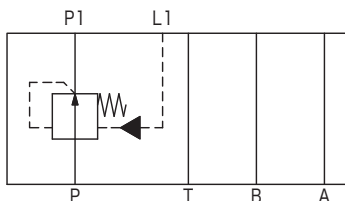


Pressure compensator valves (series type) TGMHX



- Use of these valves in combination with the directional and flow control valves (D-DFG) enables the set flow to be maintained without being affected by the changes in the load or back pressure.
- In the case of the TGMHX-3 valve, a shuttle valve module (TGMSH-3) for selecting the direction in which the pressure is to be compensated is required.

Functional Symbol



Model Code

TGMHX-3-P-04-10

1 2 3 4 5

- 1 Pressure compensator module (series type)
- 2 Mounting dimensions
 - 3: ISO 4401-03 (L1 port added)
- 3 Control line (refer to the functional symbols)
 - P: P port
- 4 Differential pressure
 - 04: 0.4 MPa
- 5 Design no.

Specifications

Model Code	Max. Working Pressure MPa	Max. Flow L/min	Min. Control Flow L/min	Weight kg
TGMHX-3	21	25	See the table below	1.1

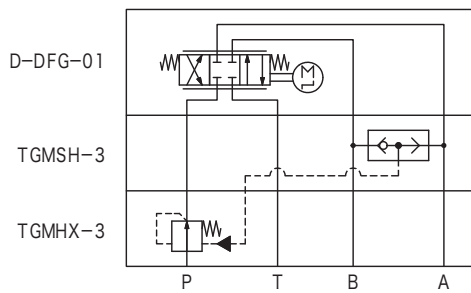
Min. control flow

Differential Pressure Between Inlet and Outlet MPa	Min. Control Flow L/min
3.5	0.1
7	0.15
10.5	0.2
14	0.25
17.5	0.3
21	0.35

Notes on Operation

- In order to achieve a satisfactory flow control, a differential pressure of 1 MPa or more is required between port P and port A (or port B) of the subplate (or manifold) on which the valve has been mounted.

Example of Circuit Used



Dimensions

